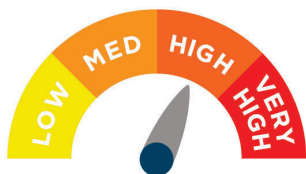


#### ALT-215/04 Alerta Mobile Battery Cushion System



**ALT-215/04 – Alerta Mobile** – a battery powered alternating pressure relieving cushion system for effective prevention and treatment of users up to high risk of developing a pressure ulcer in hospital, nursing and care home environments. The **Alerta Mobile** control unit is equipped with a long lasting Lithium Ion battery. In static mode the battery gives a remote operation time of more than 24 hours and in alternating mode the system can last at least one day.

With simple to use settings and functionality, the **Alerta Mobile** enables the care provider to quickly set up the cushion system and have it operating at optimal pressure for a specific user with ease.

The **Alerta Mobile** is a highly versatile and cost effective solution which has been manufactured to comply with the most stringent quality and in-use guidelines.

#### Key Features

- > Allows users to leave their home, get outdoors and enjoy the freedom to travel while still receiving constant pressure relief care

#### Cushion Specification

- > Cushion Dimensions: 45 x 50 x 10 cm (17.5 x 19.5 x 4")
- > Cushion Weight: 2.4kg (5.3lb)
- > Cell Structure: Cell-on-foam
- > Max Load: 130kg (286.6lb)

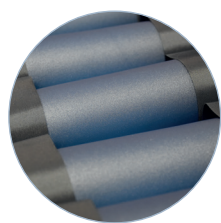
#### Cover Specification

- > Multi-stretch PU
- > Vapour permeable
- > Water resistant
- > Machine washable
- > Antimicrobial
- > Enclosed zipper
- > White underside of cover
- > BS7177: Crib 5

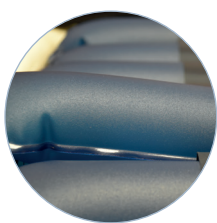
#### Pump Specification

- > Pump Dimensions: 21 x 10 x 6 cm (8.2 x 4 x 2.5")
- > Pump Weight: 0.7Kg (1.54lb)
- > Cycle Time: 10, 15, 20 minutes
- > Power Input: AC220-240V, 50-60Hz
- > Battery: 12V Lithium 2200mAh
- > Enclosed pump case fitted with hanging straps
- > Alternating and static modes
- > Visual and audible alarm for low pressure and low battery power

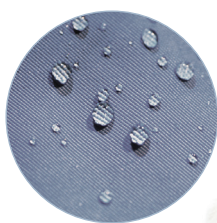
## KEY FEATURES AND BENEFITS



TPU  
coated cells



Independently  
removable cells



Multi-stretch, waterproof &  
vapour permeable PU cover



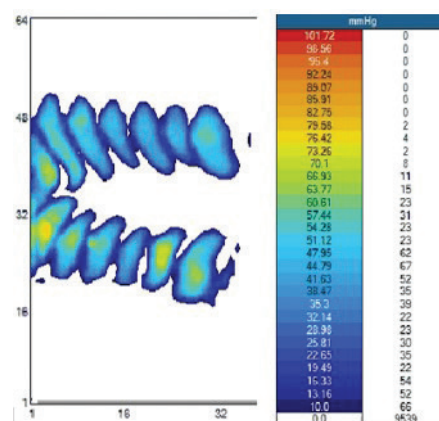
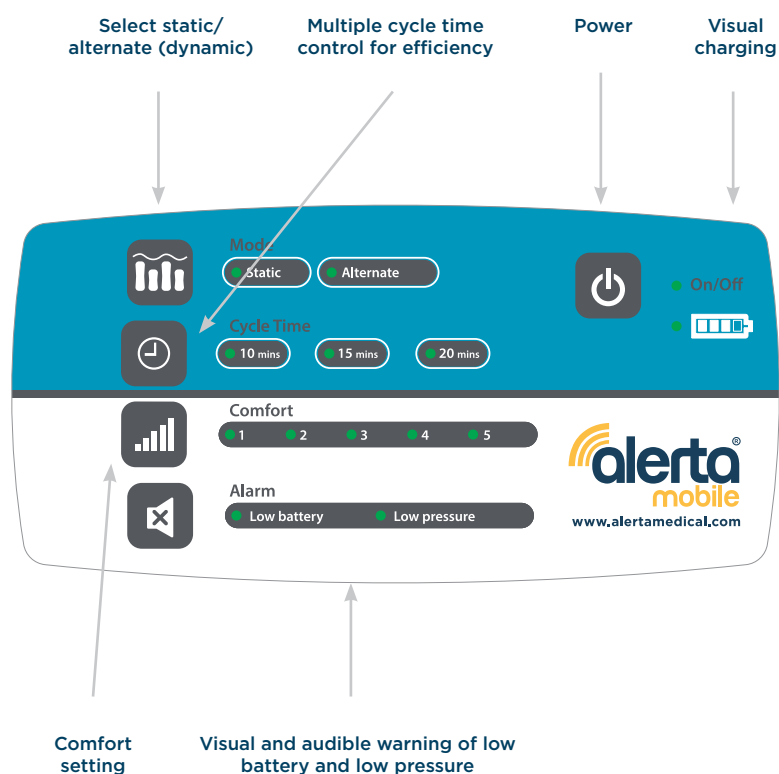
Antimicrobial,  
machine washable



Enclosed  
zipper



## CONTROL PANEL



Clinical pressure mapping evaluation