

# Rokmob® Club Sofa

TF-ROK-CL02

The Rokmob® Club Sofa is manufactured using rotational moulding to deliver exceptional durability in demanding environments — including challenging behaviour, high traffic and mental healthcare settings. All products in the Rokmob® range are designed for indoor and outdoor usage. Additional ballast weighting & Floor fixing accessories available upon request.

Slate



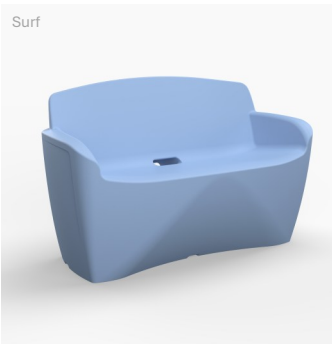
Sand



Seed



Surf



## Features:

- One piece rounded design
- Shock Resistant
- Waterproof
- Easy-to-clean and disinfect surfaces
- Standard weight: 36kg
- UV resistant
- UL94 Fire compliance
- Lifetime guarantee

## Available Options:

- Weighted (+40kg) / Unweighted
- Optional floor fixing kit

## Weighting/Ballast Note:

Specified ballast weighting is not the maximum capacity; users may add additional weighting if required. Use the removable security fixing bung located on the bottom face of the product.

## Dimensions:

(H) 800 mm

(W) 1290 mm

(L) 480 mm